

CORONAVIRUS - Surrey's response so far...

1,491 welfare visits to extremely vulnerable people



3,805 calls to the community helpline and **299** online forms handled



125 rooms secured to meet shortfall of accommodation for homeless people



1,330 food boxes sent out from the Surrey Community Hub to extremely vulnerable people



23% more waste and mixed recycling than usual has been collected from homes in Surrey



Over **37,000** donations of PPE distributed to frontline workers from Surrey businesses



94.6% increase in new library membership as people take advantage of online and digital library services



92% of household waste and recycling collection services in Surrey are still running



7,000 new volunteers mobilised in March alone through local Volunteer Centres

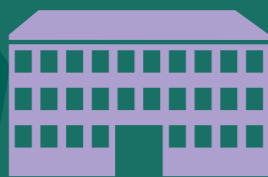


Around 8,542 grants to businesses from districts and boroughs, totalling over



£115.5m

359 schools open supporting



3,190 children of key workers and from vulnerable families



62,581 visits to the county council's coronavirus webpages



Nearly **5000** video appointments by GPs



14,555 outbound calls via councils to extremely vulnerable people



458 people working for the Local Resilience Forum responding to COVID-19



1 new community hospital made available



2 temporary mortuary sites up and running



#SurreyTogether

CORONAVIRUS - Surrey's response so far...



Office of the Police and Crime Commissioner for Surrey

